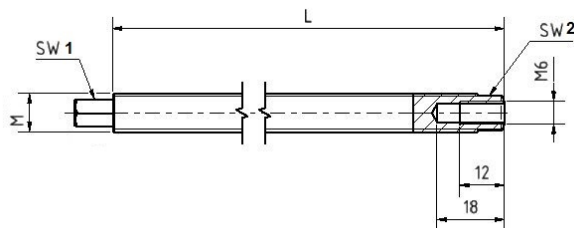


## Nivellierschraube C07 Serie

Die Schrauben sind für unsere Maschinenfüße und Gerüststellfüße zum Nivellieren vorgesehen.



## Nivellierschraube aus Material Stahl, die Oberfläche wird verzinkt

Artikel-Nr.	Abmessung	M	L	SW <sub>1</sub>	SW <sub>2</sub>	Werkstoff
CTC.M10x50M6-SW7	M10x50M6	M10	60	7	9	S235JR
CTC.M10x80M6-SW7	M10x80M6	M10	80	7	9	S235JR
CTC.M10x100M6-SW7	M10x100M6	M10	100	7	9	S235JR
CTC.M12x60M6-SW11	M12x60M6	M12	60	11	13	S235JR
CTC.M12x80M6-SW11	M12x80M6	M12	80	11	13	S235JR
CTC.M12x100M6-SW11	M12x100M6	M12	100	11	13	S235JR
CTC.M12x120M6-SW11	M12x120M6	M12	120	11	13	S235JR
CTC.M12x125M6-SW11	M12x125M6	M12	125	11	13	S235JR
CTC.M12x150M6-SW1	M12x150M6	M12	150	11	13	S235JR
CTC.M16x80M6-SW11	M16x80M6	M16	80	11	13	S235JR
CTC.M16x100M6-SW11	M16x100M6	M16	100	11	13	S235JR
CTC.M16x125M6-SW11	M16x125M6	M16	125	11	13	S235JR
CTC.M16x150M6-SW11	M16x150M6	M16	150	11	13	S235JR
CTC.M16x170M6-SW11	M16x170M6	M16	170	11	13	S235JR
CTC.M20x100M6-SW13	M20x100M6	M20	100	13	17	S235JR
CTC.M20x120M6-SW13	M20x120M6	M20	120	13	17	S235JR
CTC.M20x125M6-SW13	M20x125M6	M20	125	13	17	S235JR
CTC.M20x150M6-SW13	M20x150M6	M20	150	13	17	S235JR
CTC.M24x120M6-SW17	M24x120M6	M24	120	17	19	S235JR
CTC.M24x125M6-SW17	M24x125M6	M24	125	17	19	S235JR
CTC.M24x150M6-SW17	M24x150M6	M24	150	17	19	S235JR
CTC.M30x150M6-SW21	M30x150M6	M30	150	21	25	S235JR
CTC.M30x200M6-SW21	M30x200M6	M30	200	21	25	S235JR

## Nivellierschraube aus Material Edelstahl

Artikel	Abmessung	M	L	SW <sub>1</sub>	SW <sub>2</sub>	Werkstoff
CTC.M10x50M6E-SW7	M10x50M6	M10	60	7	9	X5CrNi18-10
CTC.M10x80M6E-SW7	M10x80M6	M10	80	7	9	X5CrNi18-10
CTC.M10x100M6E-SW7	M10x100M6	M10	100	7	9	X5CrNi18-10
CTC.M12x60M6E-SW11	M12x60M6	M12	60	11	13	X5CrNi18-10
CTC.M12x80M6E-SW11	M12x80M6	M12	80	11	13	X5CrNi18-10
CTC.M12x100M6E-SW11	M12x100M6	M12	100	11	13	X5CrNi18-10
CTC.M12x120M6E-SW11	M12x120M6	M12	120	11	13	X5CrNi18-10
CTC.M12x125M6E-SW11	M12x125M6	M12	125	11	13	X5CrNi18-10
CTC.M12x150M6E-SW11	M12x150M6	M12	150	11	13	X5CrNi18-10
CTC.M16x80M6E-SW11	M16x80M6	M16	80	11	13	X5CrNi18-10
CTC.M16x100M6E-SW11	M16x100M6	M16	100	11	13	X5CrNi18-10
CTC.M16x125M6E-SW11	M16x125M6	M16	125	11	13	X5CrNi18-10
CTC.M16x150M6E-SW11	M16x150M6	M16	150	11	13	X5CrNi18-10
CTC.M16x170M6E-SW11	M16x170M6	M16	170	11	13	X5CrNi18-10
CTC.M20x100M6E-SW13	M20x100M6	M20	100	13	17	X5CrNi18-10
CTC.M20x120M6E-SW13	M20x120M6	M20	120	13	17	X5CrNi18-10
CTC.M20x125M6E-SW13	M20x125M6	M20	125	13	17	X5CrNi18-10
CTC.M20x150M6E-SW13	M20x150M6	M20	150	13	17	X5CrNi18-10
CTC.M24x120M6E-SW17	M24x120M6	M24	120	17	19	X5CrNi18-10
CTC.M24x125M6E-SW17	M24x125M6	M24	125	17	19	X5CrNi18-10
CTC.M24x150M6E-SW17	M24x150M6	M24	150	17	19	X5CrNi18-10
CTC.M30x150M6E-SW21	M30x150M6	M30	150	21	25	X5CrNi18-10
CTC.M30x200M6E-SW21	M30x200M6	M30	200	21	25	X5CrNi18-10

- Technische Abweichung wird vorbehalten